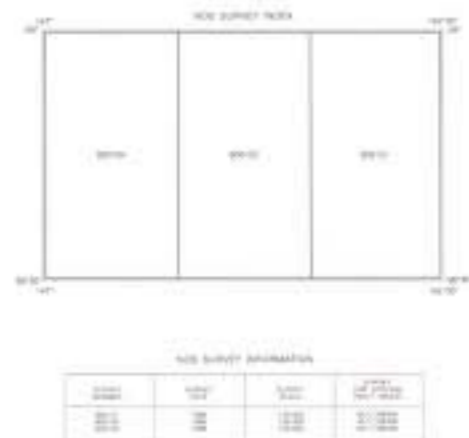


Base map information including bathymetry was compiled by the National Ocean Service (NOS). Bathymetry was compiled from NOS multibeam survey data (see notes) which comply with the National Hydrographic Organization (NHO) Special Publication 88 accuracy standards at those depths or the best of the survey. As this map is not mandated through statute to be revised or updated for hazard and navigation information, the product is not intended for navigational purposes. For navigation safety, mariners must use current charts.

Offshore geophysical survey data, published on magnetic compass by the Minerals Management Service, have been obtained from the MMS Data Conversion Staff Official Publication Diagram. The projections on this map are not for Federal listing purposes, for such purposes refer to the NOS Official Publication Diagram available from the Minerals Management Service.

International Temperature-Pressure and Density Zone 4, 10,000 meter table (1) are shown inside the map.

North American Datum 1983



Published at Washington, D.C.
U.S. DEPARTMENT OF COMMERCE
NATIONAL OCEANIC AND ATMOSPHERIC ADMINISTRATION
NATIONAL OCEAN SERVICE
1991

BATHYMETRIC CONTOUR INTERVAL: 20 METERS TO MAXIMUM DEPTH

DATUM: MEAN LOWER LOW WATER

SCALE: 1:10000



3-DIMENSIONAL VIEW



FAIRWEATHER
(N5851455W)
BATHYMETRIC MAP LM117



NOAA Electronic Chart System
ENC 1117
ENC 1118
ENC 1119
ENC 1120

