



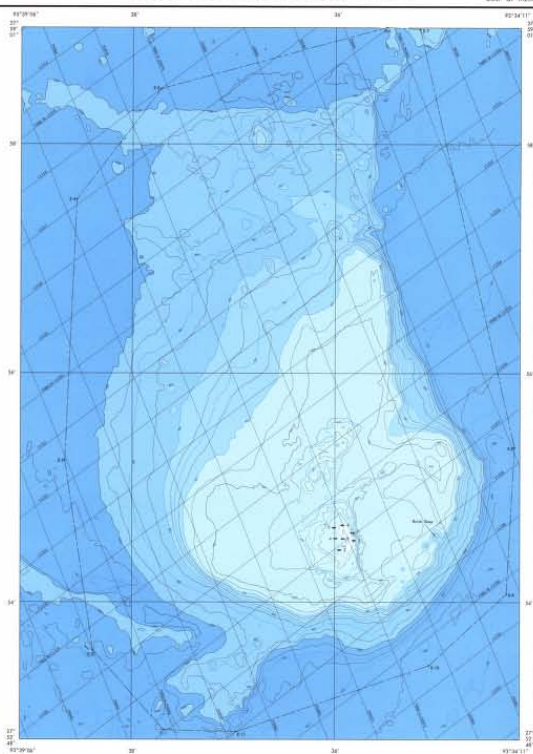
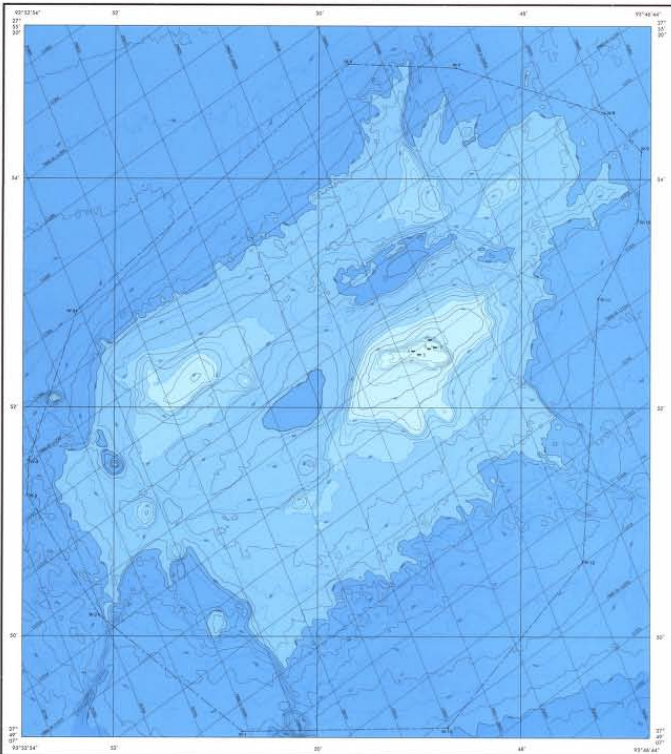
WEST FLOWER GARDEN BANK

EAST FLOWER GARDEN BANK

GULF OF MEXICO

FLOWER GARDEN BANKS NATIONAL MARINE SANCTUARY

There are existing projects in the Gulf of Mexico that may be affected by the proposed action. These include the proposed action for the West Flower Garden Bank, the proposed action for the East Flower Garden Bank, and the proposed action for the Flower Garden Banks National Marine Sanctuary. The proposed action for the West Flower Garden Bank is to establish a National Marine Sanctuary. The proposed action for the East Flower Garden Bank is to establish a National Marine Sanctuary. The proposed action for the Flower Garden Banks National Marine Sanctuary is to establish a National Marine Sanctuary.



The West Flower Garden Bank is a submerged natural formation in the Gulf of Mexico. It is located approximately 100 miles west of the Flower Garden Banks National Marine Sanctuary. The bank is a complex of several smaller banks and is characterized by its unique topography and diverse marine life. The bank is a significant natural resource and is being proposed for protection as a National Marine Sanctuary.

The East Flower Garden Bank is a submerged natural formation in the Gulf of Mexico. It is located approximately 100 miles east of the Flower Garden Banks National Marine Sanctuary. The bank is a complex of several smaller banks and is characterized by its unique topography and diverse marine life. The bank is a significant natural resource and is being proposed for protection as a National Marine Sanctuary.

The Flower Garden Banks National Marine Sanctuary is a submerged natural formation in the Gulf of Mexico. It is located approximately 100 miles east of the West Flower Garden Bank and approximately 100 miles west of the East Flower Garden Bank. The sanctuary is a complex of several smaller banks and is characterized by its unique topography and diverse marine life. The sanctuary is a significant natural resource and is being proposed for protection as a National Marine Sanctuary.

The proposed action for the West Flower Garden Bank is to establish a National Marine Sanctuary. The proposed action for the East Flower Garden Bank is to establish a National Marine Sanctuary. The proposed action for the Flower Garden Banks National Marine Sanctuary is to establish a National Marine Sanctuary.

The proposed action for the West Flower Garden Bank is to establish a National Marine Sanctuary. The proposed action for the East Flower Garden Bank is to establish a National Marine Sanctuary. The proposed action for the Flower Garden Banks National Marine Sanctuary is to establish a National Marine Sanctuary.

The proposed action for the West Flower Garden Bank is to establish a National Marine Sanctuary. The proposed action for the East Flower Garden Bank is to establish a National Marine Sanctuary. The proposed action for the Flower Garden Banks National Marine Sanctuary is to establish a National Marine Sanctuary.

The proposed action for the West Flower Garden Bank is to establish a National Marine Sanctuary. The proposed action for the East Flower Garden Bank is to establish a National Marine Sanctuary. The proposed action for the Flower Garden Banks National Marine Sanctuary is to establish a North

The proposed action for the West Flower Garden Bank is to establish a National Marine Sanctuary. The proposed action for the East Flower Garden Bank is to establish a National Marine Sanctuary. The proposed action for the Flower Garden Banks National Marine Sanctuary is to establish a National Marine Sanctuary.

The proposed action for the West Flower Garden Bank is to establish a National Marine Sanctuary. The proposed action for the East Flower Garden Bank is to establish a National Marine Sanctuary. The proposed action for the Flower Garden Banks National Marine Sanctuary is to establish a National Marine Sanctuary.

The proposed action for the West Flower Garden Bank is to establish a National Marine Sanctuary. The proposed action for the East Flower Garden Bank is to establish a National Marine Sanctuary. The proposed action for the Flower Garden Banks National Marine Sanctuary is to establish a National Marine Sanctuary.

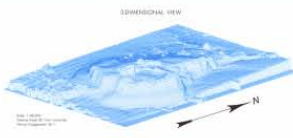
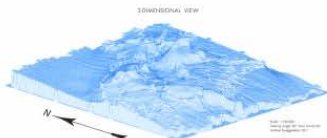
The proposed action for the West Flower Garden Bank is to establish a National Marine Sanctuary. The proposed action for the East Flower Garden Bank is to establish a National Marine Sanctuary. The proposed action for the Flower Garden Banks National Marine Sanctuary is to establish a National Marine Sanctuary.

The proposed action for the West Flower Garden Bank is to establish a National Marine Sanctuary. The proposed action for the East Flower Garden Bank is to establish a National Marine Sanctuary. The proposed action for the Flower Garden Banks National Marine Sanctuary is to establish a National Marine Sanctuary.

The proposed action for the West Flower Garden Bank is to establish a National Marine Sanctuary. The proposed action for the East Flower Garden Bank is to establish a National Marine Sanctuary. The proposed action for the Flower Garden Banks National Marine Sanctuary is to establish a National Marine Sanctuary.

The proposed action for the West Flower Garden Bank is to establish a National Marine Sanctuary. The proposed action for the East Flower Garden Bank is to establish a National Marine Sanctuary. The proposed action for the Flower Garden Banks National Marine Sanctuary is to establish a National Marine Sanctuary.

The proposed action for the West Flower Garden Bank is to establish a National Marine Sanctuary. The proposed action for the East Flower Garden Bank is to establish a National Marine Sanctuary. The proposed action for the Flower Garden Banks National Marine Sanctuary is to establish a National Marine Sanctuary.



FLOWER GARDEN BANKS NATIONAL MARINE SANCTUARY BATHYMETRIC MAP MS-1

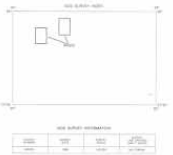
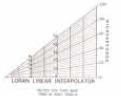
Revised June 11

Published at Washington, D.C.
U.S. DEPARTMENT OF COMMERCE
NATIONAL OCEANIC AND ATMOSPHERIC ADMINISTRATION
NATIONAL COAST SERVICE
IDEAL AND GEODESIC SURVEY
1982

BATHYMETRIC CONTOUR INTERVALS: 10 METERS TO MAXIMUM DEPTH;
SUBSEQUENTLY BY 5 METER INTERVALS.



DEPTH (METERS)	DEPTH (FATHOMS)
0	0
1	0.5
2	1.0
3	1.5
4	2.0
5	2.5
6	3.0
7	3.5
8	4.0
9	4.5
10	5.0
11	5.5
12	6.0
13	6.5
14	7.0
15	7.5
16	8.0
17	8.5
18	9.0
19	9.5
20	10.0
21	10.5
22	11.0
23	11.5
24	12.0
25	12.5
26	13.0
27	13.5
28	14.0
29	14.5
30	15.0
31	15.5
32	16.0
33	16.5
34	17.0
35	17.5
36	18.0
37	18.5
38	19.0
39	19.5
40	20.0
41	20.5
42	21.0
43	21.5
44	22.0
45	22.5
46	23.0
47	23.5
48	24.0
49	24.5
50	25.0
51	25.5
52	26.0
53	26.5
54	27.0
55	27.5
56	28.0
57	28.5
58	29.0
59	29.5
60	30.0
61	30.5
62	31.0
63	31.5
64	32.0
65	32.5
66	33.0
67	33.5
68	34.0
69	34.5
70	35.0
71	35.5
72	36.0
73	36.5
74	37.0
75	37.5
76	38.0
77	38.5
78	39.0
79	39.5
80	40.0
81	40.5
82	41.0
83	41.5
84	42.0
85	42.5
86	43.0
87	43.5
88	44.0
89	44.5
90	45.0
91	45.5
92	46.0
93	46.5
94	47.0
95	47.5
96	48.0
97	48.5
98	49.0
99	49.5
100	50.0



DEPTH (METERS)	DEPTH (FATHOMS)
0	0
1	0.5
2	1.0
3	1.5
4	2.0
5	2.5
6	3.0
7	3.5
8	4.0
9	4.5
10	5.0
11	5.5
12	6.0
13	6.5
14	7.0
15	7.5
16	8.0
17	8.5
18	9.0
19	9.5
20	10.0
21	10.5
22	11.0
23	11.5
24	12.0
25	12.5
26	13.0
27	13.5
28	14.0
29	14.5
30	15.0
31	15.5
32	16.0
33	16.5
34	17.0
35	17.5
36	18.0
37	18.5
38	19.0
39	19.5
40	20.0
41	20.5
42	21.0
43	21.5
44	22.0
45	22.5
46	23.0
47	23.5
48	24.0
49	24.5
50	25.0
51	25.5
52	26.0
53	26.5
54	27.0
55	27.5
56	28.0
57	28.5
58	29.0
59	29.5
60	30.0
61	30.5
62	31.0
63	31.5
64	32.0
65	32.5
66	33.0
67	33.5
68	34.0
69	34.5
70	35.0
71	35.5
72	36.0
73	36.5
74	37.0
75	37.5
76	38.0
77	38.5
78	39.0
79	39.5
80	40.0
81	40.5
82	41.0
83	41.5
84	42.0
85	42.5
86	43.0
87	43.5
88	44.0
89	44.5
90	45.0
91	45.5
92	46.0
93	46.5
94	47.0
95	47.5
96	48.0
97	48.5
98	49.0
99	49.5
100	50.0

Vertical Traverse Method
North American Datum, 1983