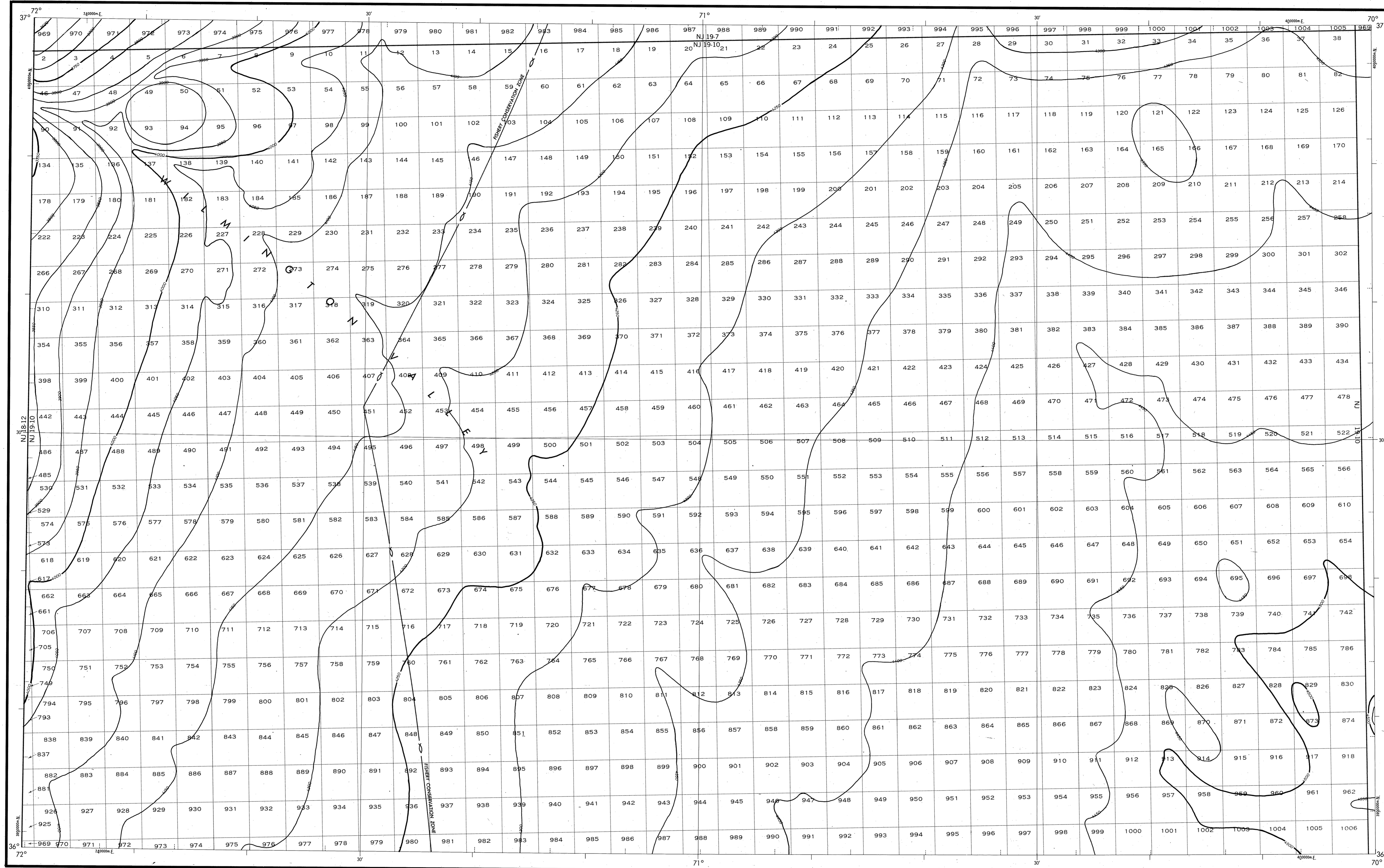


BATHYMETRIC MAP

ATLANTIC OCEAN
WILMINGTON VALLEY



Bathymetry compiled by the National Ocean Service (NOS) from Bathymetric Data other than NOS hydrographic surveys. This is a facsimile reproduction of the bathymetric manuscript and does not necessarily represent its final published form. This information is not intended for navigational purposes.
Bathymetric Contour Interval: 50 meters to maximum depth.
Universal Transverse Mercator Grid, Zone 19; 10,000 meter ticks (---) are shown inside the neoline.
Protraction Diagram data shown in subdued (screened) block was compiled by the Minerals Management Service (MMS).
THIS MAP IS NOT A LEGAL DOCUMENT for Federal leasing purposes; for such purposes use the MMS Outer Continental Shelf Official Protraction Diagrams.
Heavy line(s) indicate limits of these protraction diagrams.

EVALUATION OF BATHYMETRIC DATA
Bathymetry compiled by the National Ocean Service from Random Trackings and Bathymetric Surveys dated 1959 to 1974. The bathymetric data ranges in scale from 1:500,000 to 1:1,000,000 with a minimum line spacing of 3.0 and a maximum line spacing of 15.0 nautical miles. Data corrected for sound velocity according to Matthews' Tables, 1939.

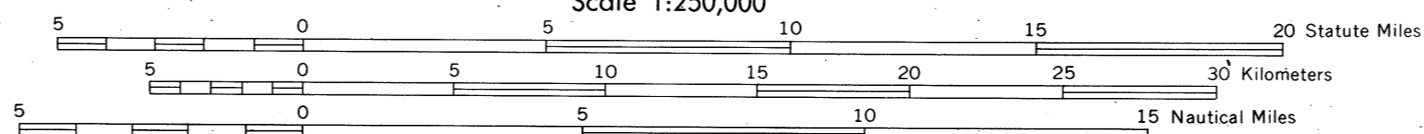
OUTER CONTINENTAL SHELF RESOURCE MANAGEMENT MAP

UNITED STATES DEPARTMENT OF COMMERCE
NATIONAL OCEANIC AND ATMOSPHERIC ADMINISTRATION
NATIONAL OCEAN SERVICE
1983

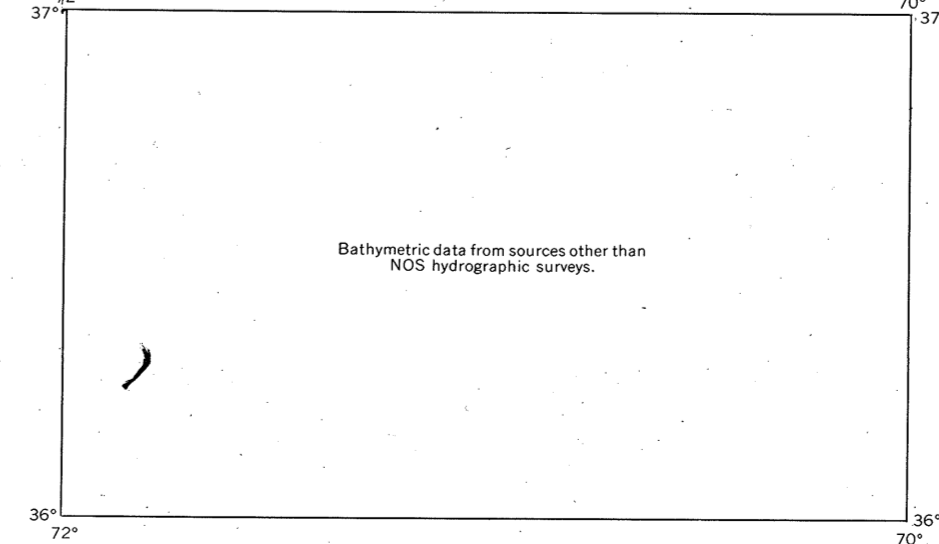
Produced at Washington, D.C.
for

UNITED STATES DEPARTMENT OF THE INTERIOR
MINERALS MANAGEMENT SERVICE

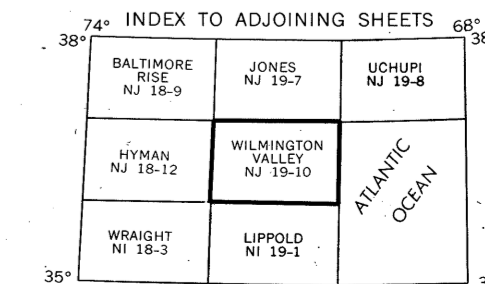
TRANSVERSE MERCATOR PROJECTION
Scale 1:250,000



BATHYMETRIC DATA INDEX



WILMINGTON VALLEY
NOS NJ 19-10 (OCS)



DRAWING NUMBER
NJ 19-10
Wilmington Valley, VA, NC

DRAWING NUMBER
1:250,000

DRAWING NUMBER

DRAWING NUMBER