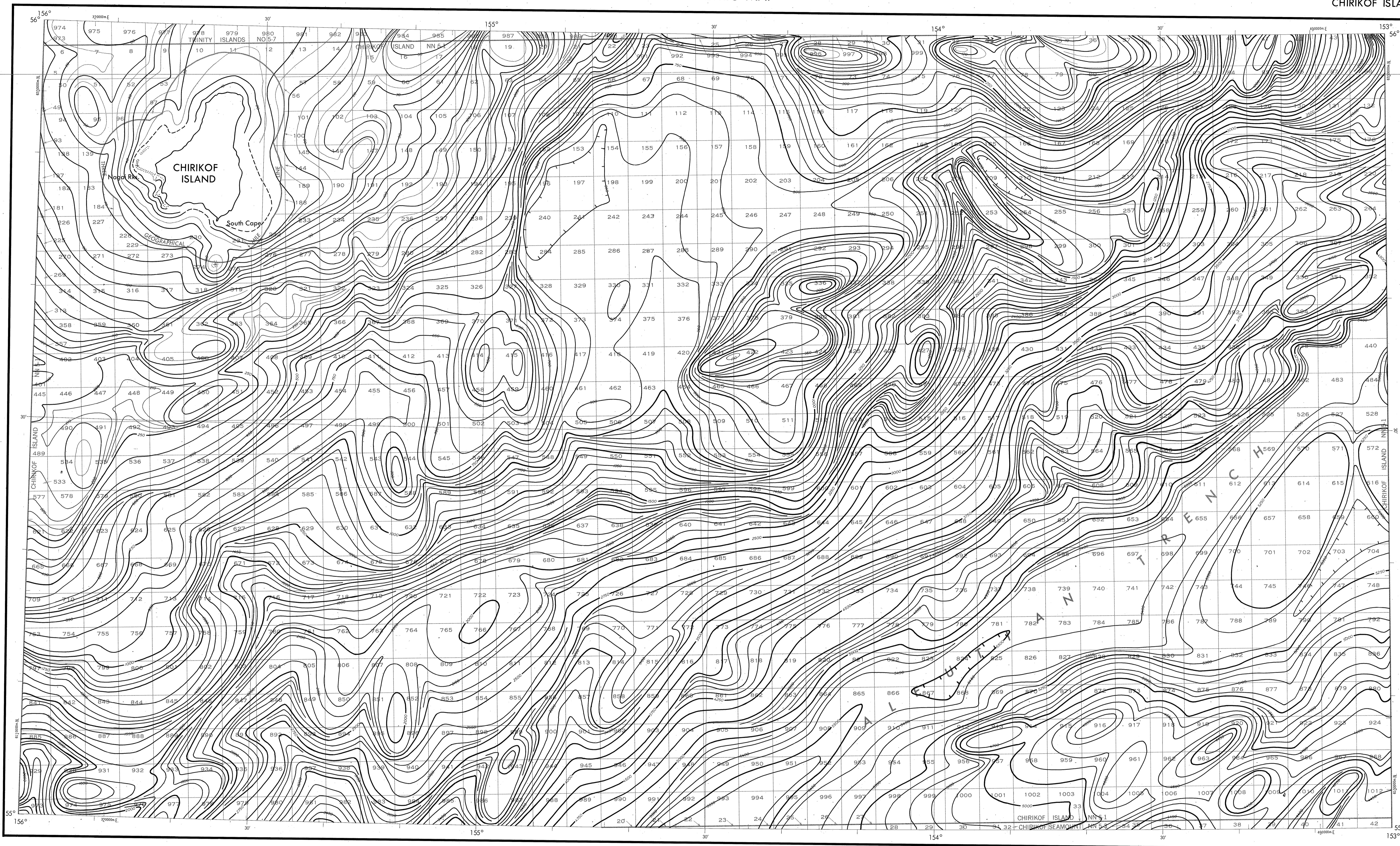


BATHYMETRIC MAP

GULF OF ALASKA
CHIRIKOF ISLAND



Bathymetry compiled by the National Ocean Service (NOS) from bathymetric data other than NOS hydrographic surveys. This is a facsimile reproduction of the bathymetric manuscript and does not necessarily represent the final published form. This information is not intended for navigational purposes.
Bathymetric Contour Intervals: 10 meters to 200 meter depth, supplemented by 5 meter intervals, thence 50 meters to maximum depth, supplemented by 10 meter intervals.
Datum: Mean Lower Low Water (MLLW).
Universal Transverse Mercator Grid, Zone 5; 10,000 meter ticks (---) are shown inside the rectangle.
Protraction Diagram data shown in a subdivided (screened) block was compiled by the Minerals Management Service (MMS).
THIS MAP IS NOT A LEGAL DOCUMENT for Federal leasing purposes; for such purposes use the MMS Outer Continental Shelf Official Protraction Diagrams.
Heavy line(s) indicate limits of these protraction diagrams.

EVALUATION OF BATHYMETRIC DATA

Bathymetry compiled by the National Ocean Service from Random Trackline and Bathymetric Survey Lines, 1948 to 1980. The Bathymetric Data ranges in scale from 1:500,000 to 1:1,000,000 with a minimum line spacing of 5.0 and a maximum line spacing of 15.0 nautical miles. Data corrected for sound velocity according to Echo-Sounding Correction Tables, 1980.

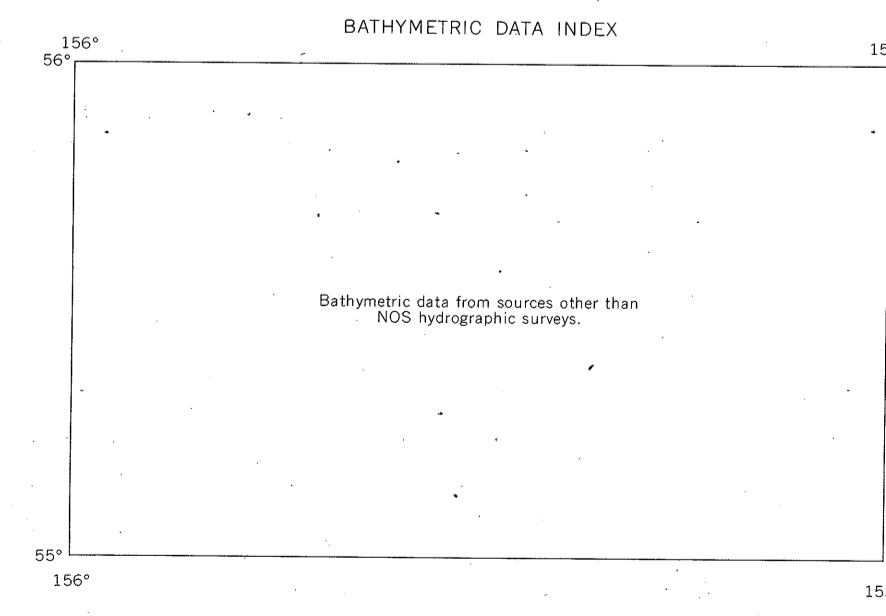
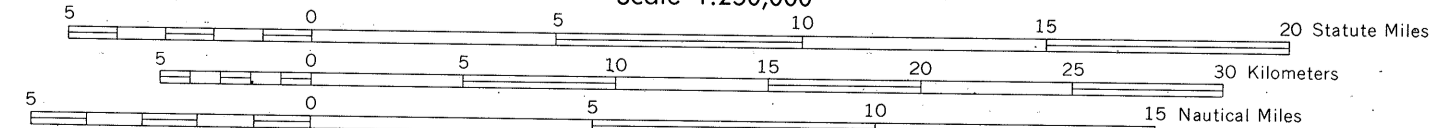
OUTER CONTINENTAL SHELF RESOURCE MANAGEMENT MAP

UNITED STATES DEPARTMENT OF COMMERCE
NATIONAL OCEANIC AND ATMOSPHERIC ADMINISTRATION
NATIONAL OCEAN SERVICE

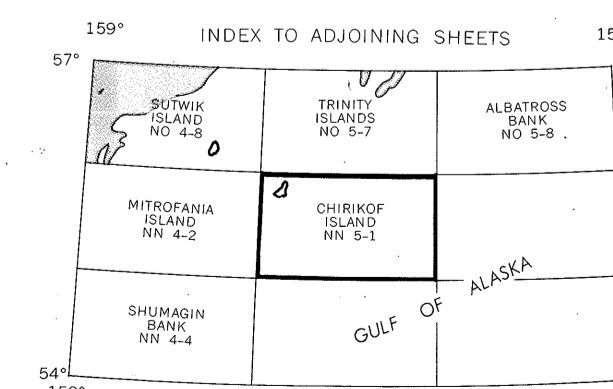
1989
Produced at Washington, D.C.
for

UNITED STATES DEPARTMENT OF THE INTERIOR
MINERALS MANAGEMENT SERVICE

TRANSVERSE MERCATOR PROJECTION
Scale 1:250,000



CHIRIKOF ISLAND
NOS NN 5-1 (OCS)



DRAWING NUMBER
NN 5-1
Chirikof Is., AK

DRAWING NUMBER
1:250,000

DRAWING NUMBER

DRAWING NUMBER