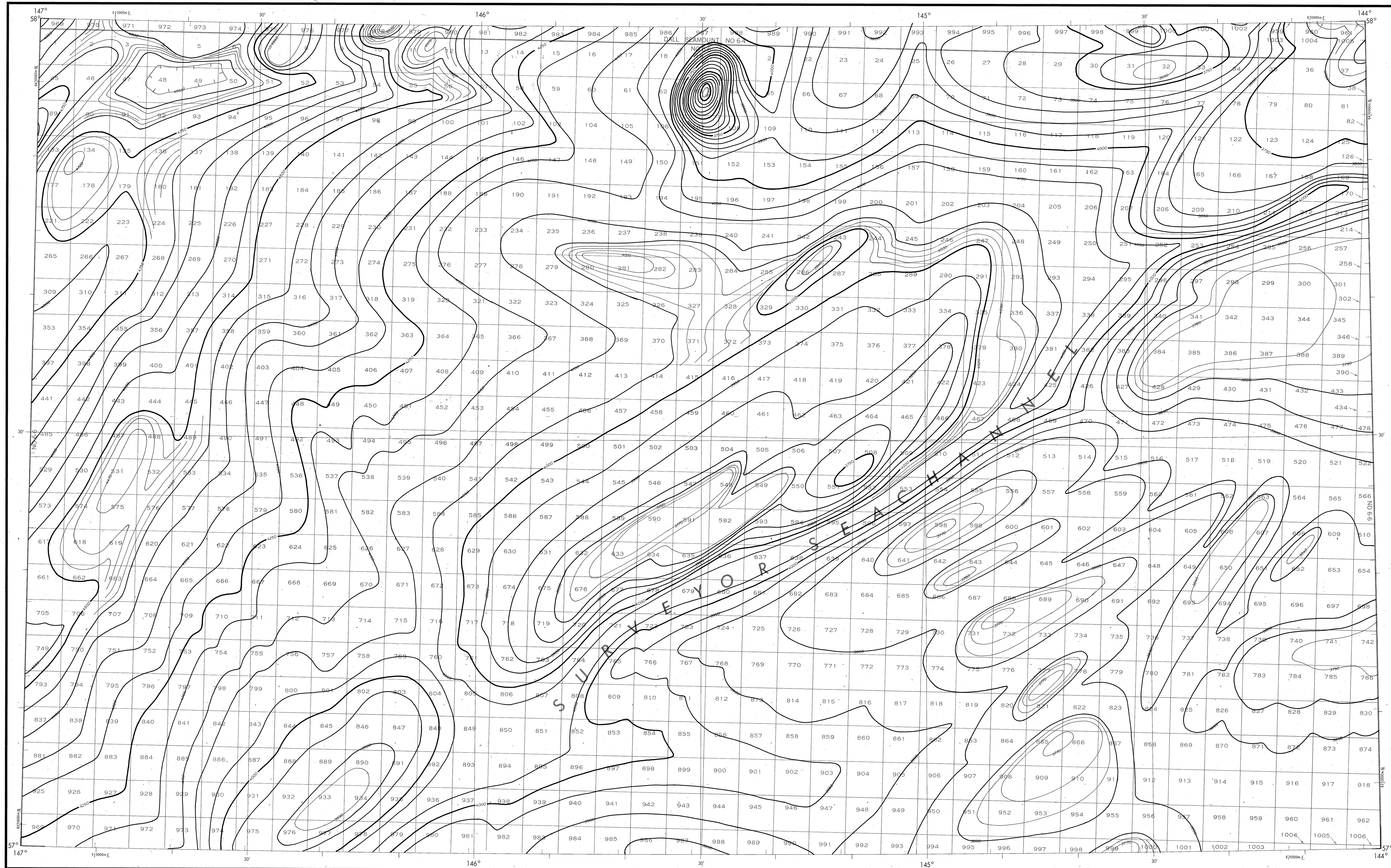


BATHYMETRIC MAP

GULF OF ALASKA  
SURVEYOR SEACHANNEL



Bathymetry compiled by the National Ocean Service (NOS) from bathymetric data other than NOS hydrographic surveys. This is a facsimile reproduction of the bathymetric manuscript and does not necessarily represent the final published form. This information is not intended for navigational purposes.

Bathymetric Contour Intervals: 50 meters to maximum depth, supplemented by 10 meter intervals.  
Datum: Mean Lower Low Water (MLLW).  
Universal Transverse Mercator Grid, Zone 6; 10,000 meter ticks (---) are shown inside the outline.

Protraction Diagram shown in a subdued (screened) black was compiled by the Minerals Management Service (MMS).  
THIS MAP IS NOT A LEGAL DOCUMENT for Federal leasing purposes; for such purposes use the MMS Outer Continental Shelf Official Protraction Diagrams.  
Heavy lines indicate limits of these protraction diagrams.

EVALUATION OF BATHYMETRIC DATA

Bathymetry compiled by the National Ocean Service from Bathymetric and Bathymetric Surveys dated 1944 to 1980. The bathymetric data were obtained from NOS hydrographic surveys. The bathymetric data were obtained from NOS hydrographic surveys. The bathymetric data were obtained from NOS hydrographic surveys. The bathymetric data were obtained from NOS hydrographic surveys.

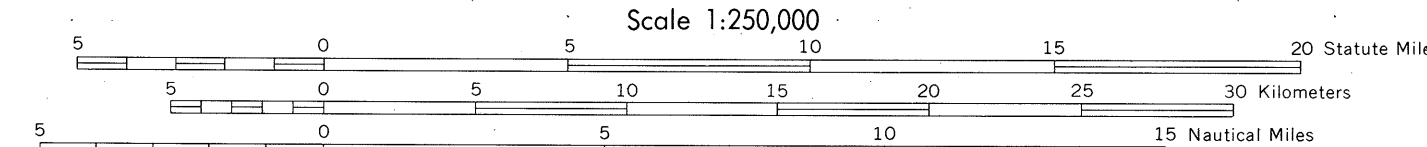
OUTER CONTINENTAL SHELF RESOURCE MANAGEMENT MAP

UNITED STATES DEPARTMENT OF COMMERCE  
NATIONAL OCEANIC AND ATMOSPHERIC ADMINISTRATION  
NATIONAL OCEAN SERVICE  
1988

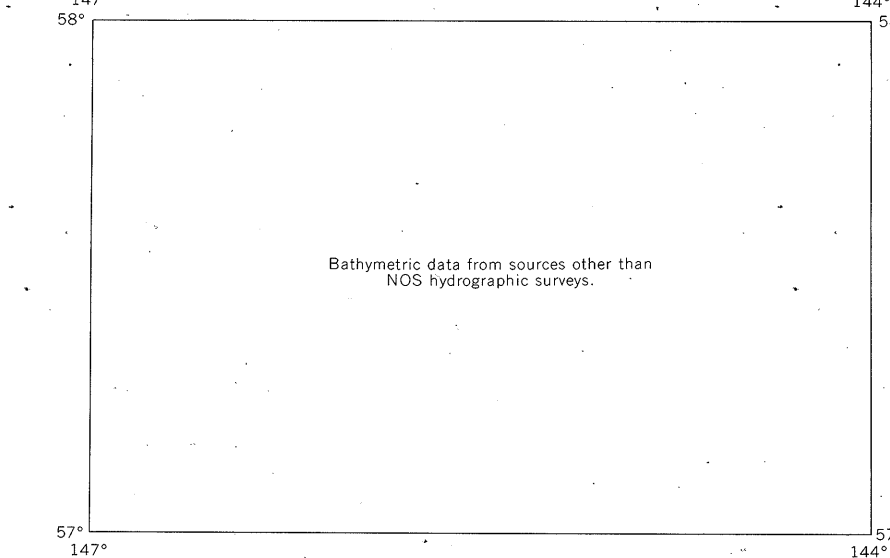
Produced at Washington, D.C.  
for

UNITED STATES DEPARTMENT OF THE INTERIOR  
MINERALS MANAGEMENT SERVICE

TRANSVERSE MERCATOR PROJECTION  
Scale 1:250,000

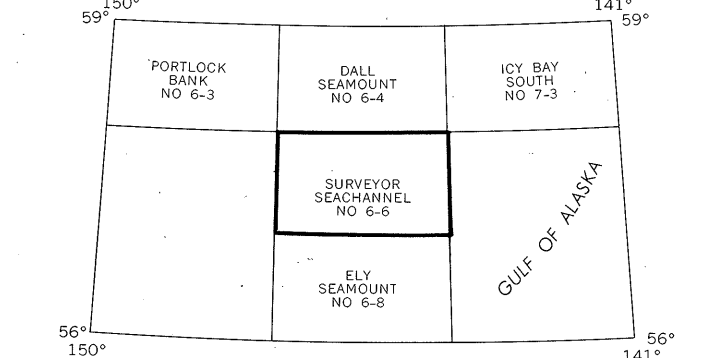


BATHYMETRIC DATA INDEX



SURVEYOR SEACHANNEL  
NOS NO 6-6 (OCS)

INDEX TO ADJOINING SHEETS



DRAWING NUMBER  
1:250,000  
DRAWING NUMBER  
1:250,000  
DRAWING NUMBER  
1:250,000  
DRAWING NUMBER  
1:250,000