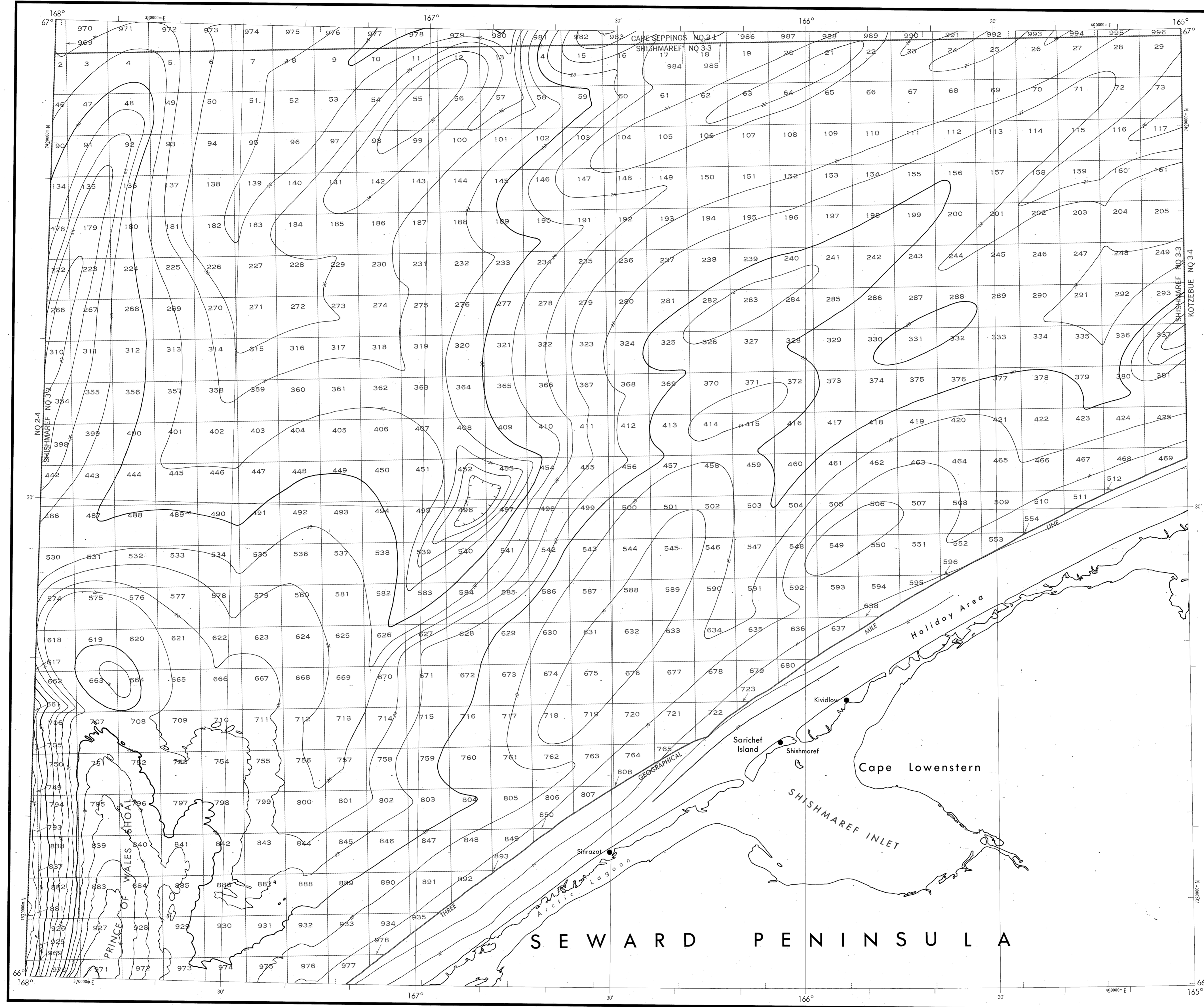


BATHYMETRIC MAP

SEWARD PENINSULA
SHISHMAREF



Base map information including bathymetry was compiled by the National Ocean Service (NOS). Bathymetry was compiled from NOS hydrographic surveys supplemented by hydrographic information from other sources (see index). NOS hydrographic survey data complies with International Hydrographic Organization (IHO) Publication 44 accuracy standards or those used at the date of the surveys. This is a reproduction of a facsimile of the bathymetric manuscript and does not necessarily represent the final publication. This information is not intended for navigational purposes.

Bathymetric Contour Intervals: 10 meters to maximum depth, supplemented by 2 meter intervals.

Datum: Mean Lower Low Water (MLLW).

Universal Transverse Mercator Grid, Zone 3; 10,000 meter ticks (---) are shown inside the neatline.

Protraction Diagram data shown in a subdued (screened) block was compiled by the Minerals Management Service (MMS).

THIS MAP IS NOT A LEGAL DOCUMENT for Federal leasing purposes; for such purposes use the MMS Outer Continental Shelf Official Protraction Diagrams.

Heavy line(s) indicate limits of these protraction diagrams.

HYDROGRAPHIC SURVEY INFORMATION			
SURVEY NUMBER	SURVEY DATE	SURVEY SCALE	SURVEY LINE SPACING (NAUT. MILES)
H-7847a	1950	1:20,000	20-25
H-7847b	1950	1:20,000	10-20
H-7848a	1950	1:20,000	10-20
H-7848b	1950	1:20,000	20-25
H-7850	1950	1:40,000	30-50

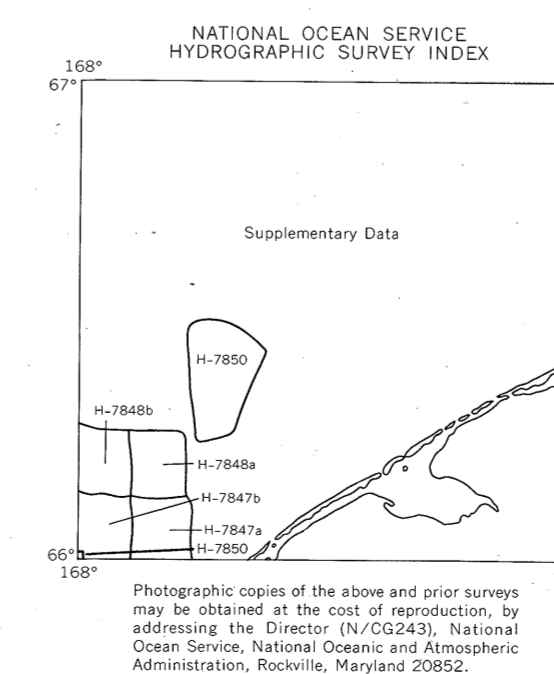
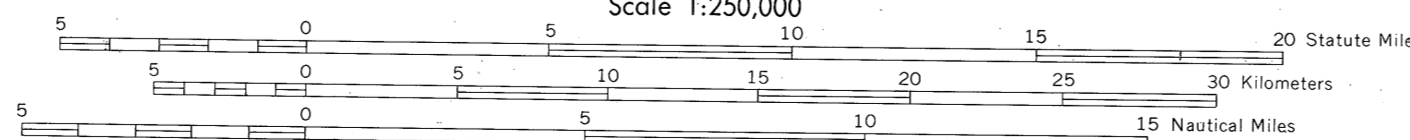
OUTER CONTINENTAL SHELF RESOURCE MANAGEMENT MAP

UNITED STATES DEPARTMENT OF COMMERCE
NATIONAL OCEANIC AND ATMOSPHERIC ADMINISTRATION
NATIONAL OCEAN SERVICE

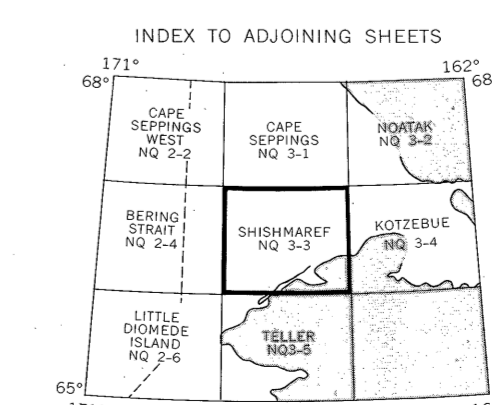
1986
Produced at Washington, D.C.
for

UNITED STATES DEPARTMENT OF THE INTERIOR
MINERALS MANAGEMENT SERVICE

TRANSVERSE MERCATOR PROJECTION
Scale 1:250,000



SHISHMAREF
NOS NQ 3-3 (OCS)



DRAWING NUMBER
 MMS-3-3
 SHISHMAREF, AK
 DRAWING NUMBER
 1:250,000
 DRAWING NUMBER
 DRAWING NUMBER