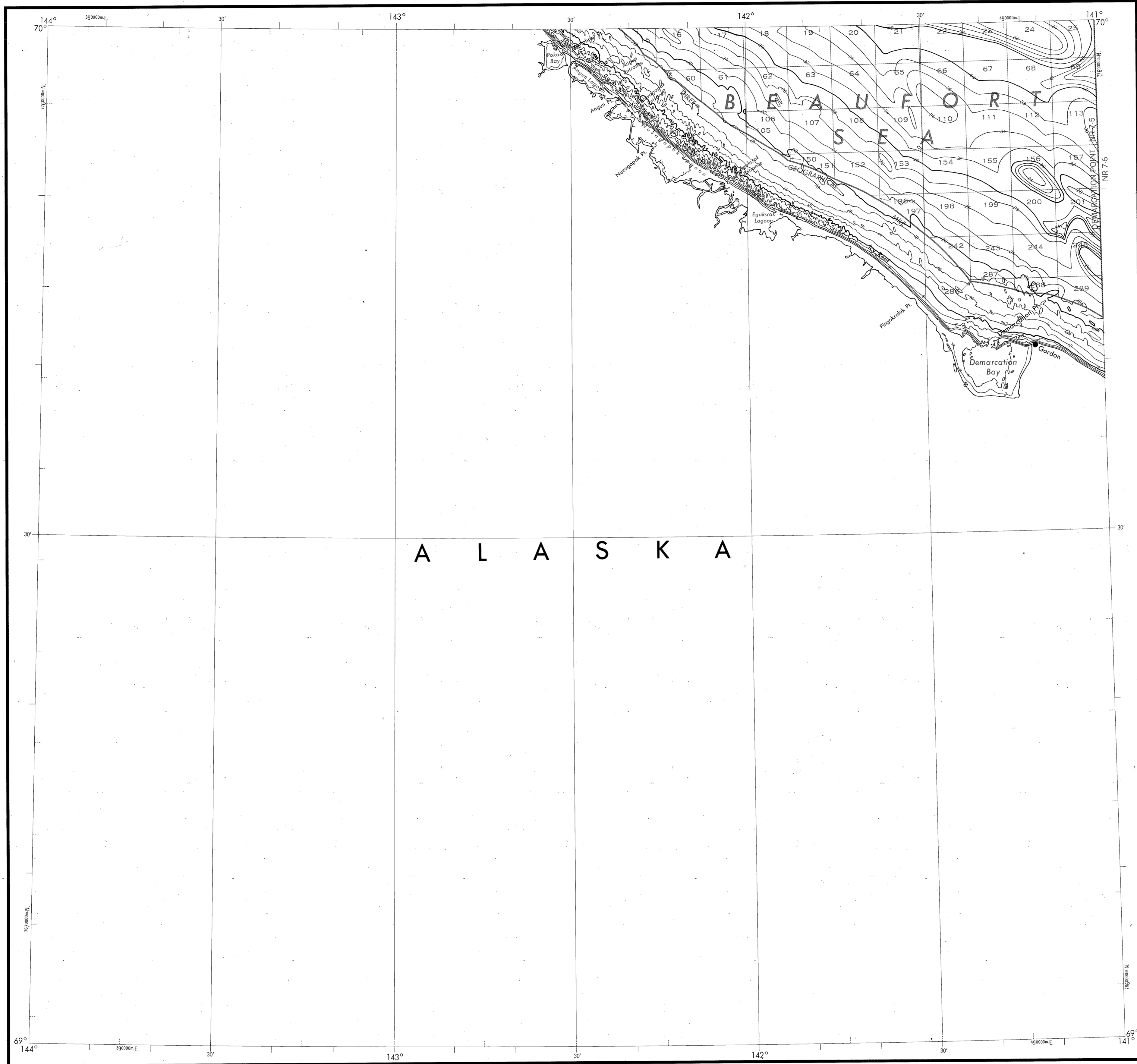


BATHYMETRIC MAP

BEAUFORT SEA
DEMARICATION POINT



Base map information including bathymetry was compiled by the National Ocean Service (NOS). Bathymetry was compiled from NOS hydrographic surveys supplemented by hydrographic information from other sources (see index). NOS hydrographic survey data complies with International Hydrographic Organization (IHO) Publication 44 accuracy standards or those used at the date of the surveys. This is a reproduction of a facsimile of the bathymetric manuscript and does not necessarily represent the final publication. This information is not intended for navigational purposes.

Bathymetric Contour Intervals: 10 meters to maximum depth, supplemented by 2 meter intervals.

Datum: Mean Lower Low Water (MLLW).

Universal Transverse Mercator Grid. Zone 7; 10,000 meter ticks (---) are shown inside the neatline.

Protraction Diagram data shown in a subdued (screened) black was compiled by the Minerals Management Service (MMS).

THIS MAP IS NOT A LEGAL DOCUMENT for Federal leasing purposes; for such purposes use the MMS Outer Continental Shelf Official Protraction Diagrams.

Heavy line(s) indicate limits of these protraction diagrams.

HYDROGRAPHIC SURVEY INFORMATION

SURVEY NUMBER	SURVEY DATE	SURVEY SCALE	SURVEY LINE SPACING (NAUT. MILES)
H-7980	1952	1:20,000	03-12
H-7981	1952	1:20,000	04-10
H-7982	1952	1:20,000	04-16
H-7983	1952	1:40,000	05-12
H-7984	1952	1:40,000	06-10

CANADIAN CHART 7601 1979 1:150,000

OUTER CONTINENTAL SHELF RESOURCE MANAGEMENT MAP

UNITED STATES DEPARTMENT OF COMMERCE
NATIONAL OCEANIC AND ATMOSPHERIC ADMINISTRATION
NATIONAL OCEAN SERVICE

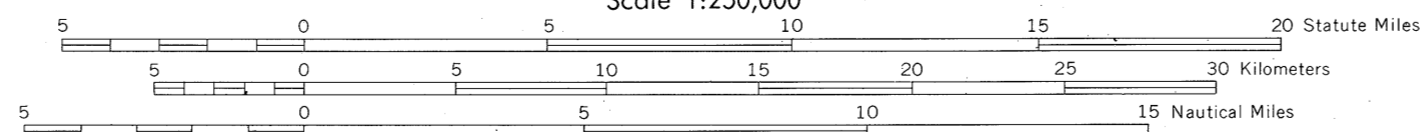
1986

Produced at Washington, D.C.
for

UNITED STATES DEPARTMENT OF THE INTERIOR
MINERALS MANAGEMENT SERVICE

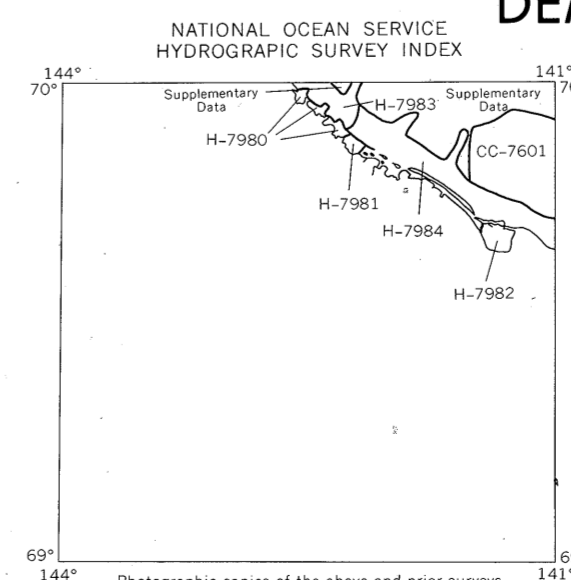
TRANSVERSE MERCATOR PROJECTION

Scale 1:250,000

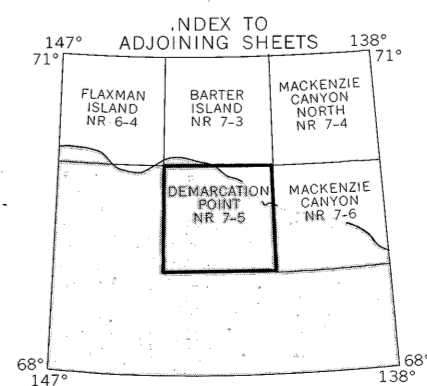


DEMARICATION POINT

NOS NR 7-5 (OCS)



Photographic copies of the above and prior surveys may be obtained, at the cost of reproduction, by addressing the Director (N/O243), National Ocean Service, National Oceanic and Atmospheric Administration, Rockville, Maryland 20852.



DRAWING NUMBER
NOS NR 7-5
DEMARICATION POINT, AK
PLANNED COOPERATION • BERING, CALIFORNIA
REGISTRATION NUMBER 07284
POSITION DATE OF PRINT ON THIS LINE

DRAWING NUMBER
1:250,000
PLANNED COOPERATION • BERING, CALIFORNIA
REGISTRATION NUMBER 07284
POSITION DATE OF PRINT ON THIS LINE

DRAWING NUMBER
PLANNED COOPERATION • BERING, CALIFORNIA
REGISTRATION NUMBER 07284
POSITION DATE OF PRINT ON THIS LINE

DRAWING NUMBER
PLANNED COOPERATION • BERING, CALIFORNIA
REGISTRATION NUMBER 07284
POSITION DATE OF PRINT ON THIS LINE