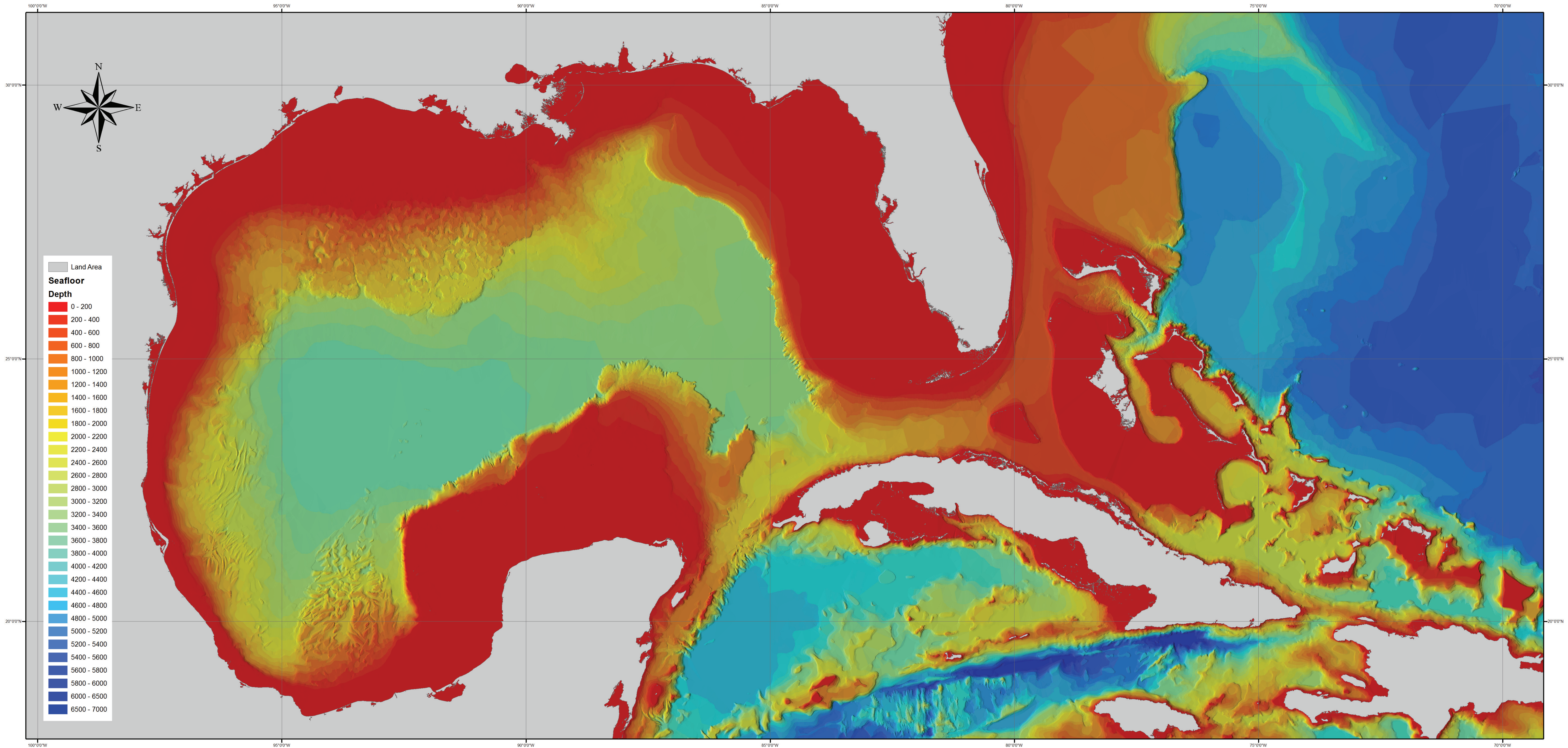


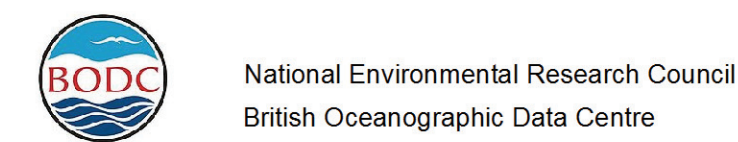
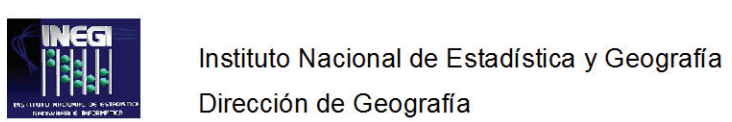
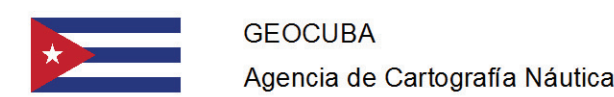
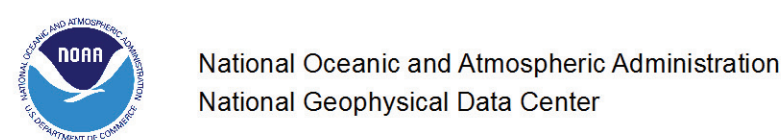
BATHYMETRY OF THE GULF OF MEXICO AND ADJACENT AREAS OF THE CARIBBEAN SEA AND ATLANTIC OCEAN IN SHADED RELIEF

Source: IBCCA (International Bathymetric Chart of the Caribbean Sea and the Gulf of Mexico)



Contributors to IBCCA, Gulf of Mexico and Adjacent Areas:

IBCCA Sponsors:



Intergovernmental Oceanographic Commission



International Hydrographic Organization

0 62.5 125 250 375 500 Kilometers

Prepared by T. L. Holcombe, W. J. Rentería, and W. R. Bryant

Illumination from the west at 30 degrees

Note: This map is intended to illustrate ocean-floor topography only and IS NOT BE USED FOR NAVIGATION